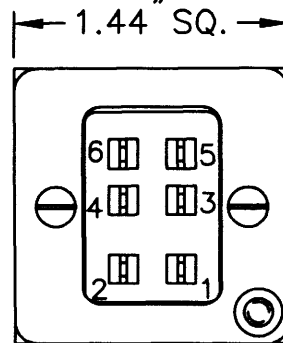
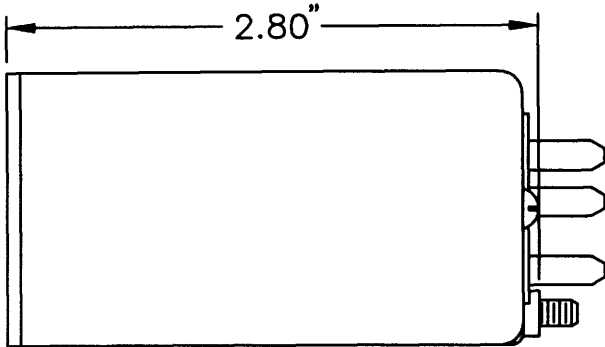


OIL/COOLANT TEMP CLUSTER MODULE

PART NUMBER: ~~169CL 1 (*) OIL TEMP, OR 169CL 11 (*) COOLANT TEMP.~~ (OUT OF PROD.)

169CL1-1-(*) OIL TEMP, OR 169CL1-11-(*) COOLANT TEMP. Δ

* THIS DASH NO. WILL BE THE SUFFIX NUMBER ASSIGNED TO THE CLUSTER BEING BUILT. EXAMPLE: ~~169CL 1 TD9999, OR 169CL 11 TD9999~~ (4 PIN CONNECTOR)
169CL1-1-TD9999, OR 169CL1-11-TD9999 (6 PIN CONNECTOR) Δ



Δ

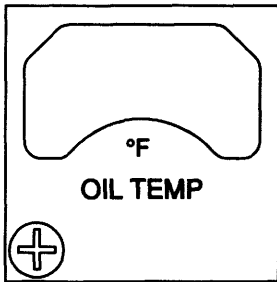
1. DIAL & BEZEL GRAPHICS:
LETTERS, NUMERALS & GRADS TO BE WHITE ON BLACK BACKGROUND
2. LIGHTING: BLUE WHITE COLOR
3. RANGE MARKS:
COLORS: GREEN PER 8A070-001
YELLOW PER 8A059-009
BLUE PER 8A059-014
RED PER 8A060-006
SIZE: ARC'S (.06 WIDE)
LINES (.03 x .12)

MALE CONNECTOR
SIGMA TEK P/N S24003-004P Δ
MATING CONNECTOR
SIGMA TEK P/N S24003-004S

CONNECTOR WIRING
PIN 1 +14 OR 28 VDC
PIN 2 GROUND (INDICATOR)
PIN 3 TRANSMITTER SIGNAL
PIN 4 +14 OR 28 VDC LTS
PIN 5 OPEN
PIN 6 OPEN
CASE GROUND (LIGHTING)

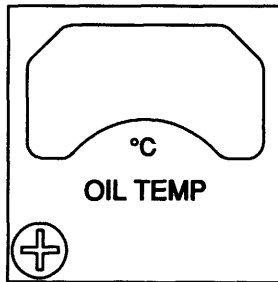
4. THIS UNIT IS APPROVED PER FAA TSO-C43, TYPE I
- Δ 5. THIS UNIT IS CALIBRATED TO OPERATE WITH SIGMA TEK PROBE PART NO. S21023-001. (MS28034-1)
6. BEZELS AVAILABLE:

BEZEL 1



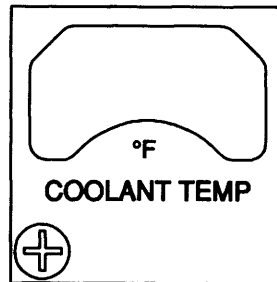
A/W 5B845-001

BEZEL 2



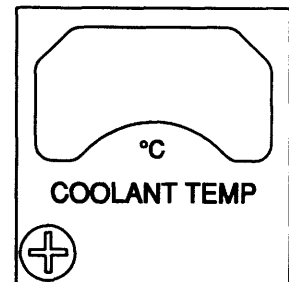
A/W 5B845-002

BEZEL 3



A/W 5B845-022

BEZEL 4



A/W 5B845-023

				D	9/2/98	2-9064	JB		
				C	8/28/98	2-8990	JB	DWG. BY	R.SCOTT
F	6/10/13	3-4246		B	10/14/97	2-8454	JB	APPROVAL	10/1/97
E	2/3/03	3-1308		JB	A	RELEASE	JB	PROJ. ENG.	J.BISHOP
ISS.	DATE	PCO NO.		CHK	ISS.	DATE		NAME	DATE

CUSTOMER ACCEPTANCE SPECIFICATION

A1431M01

SIGMA-TEK
AUGUSTA, KANSAS

CONFIDENTIALITY NOTICE
This information is proprietary to SIGMA-TEK, and any reproduction, disclosure, or use thereof is expressly prohibited without the written permission of Sigma Tek, Inc.

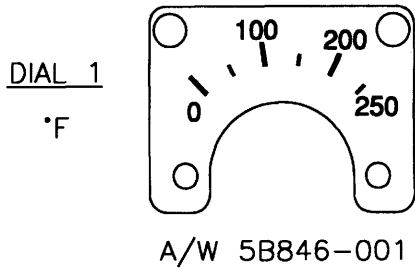
TITLE
OIL/COOLANT TEMP MODULE
~~169CL 1(-)(-) OUT OF PROD.~~
169CL1-1(-)(-) Δ

SPEC. NO.
6A1431

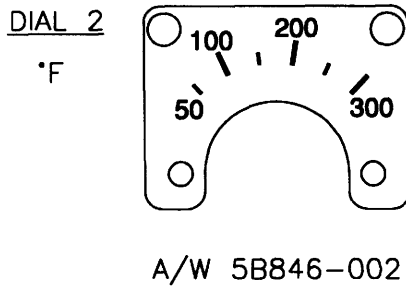
PAGE 1 OF 2 ISSUE F

OIL/COOLANT TEMP MODULE

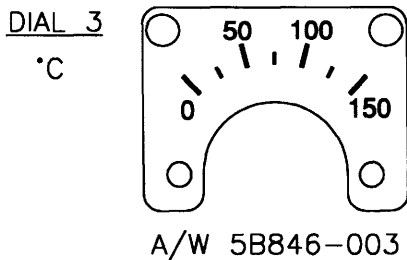
7. DIALS AVAILABLE:



FUNCTIONAL TEST		
READING (°F)	TEST (OHMS)	TOL. (±°F)
0	84.50	5
50	93.50	5
100	103.78	5
150	114.50	5
200	125.98	5
250	138.30	5
FRICTION ERROR (±5 °F)		
POSITION ERROR (±5 °F)		



FUNCTIONAL TEST		
READING (°F)	TEST (OHMS)	TOL. (±°F)
50	93.50	5
100	103.78	5
150	114.50	5
200	125.98	5
250	138.30	5
300	151.33	5
FRICTION ERROR (±5 °F)		
POSITION ERROR (±5 °F)		



FUNCTIONAL TEST		
READING (°C)	TEST (OHMS)	TOL. (±°C)
0	90.38	3
50	108.39	3
100	128.85	3
150	151.91	3
FRICTION ERROR (±3 °C)		
POSITION ERROR (±3 °C)		

8. VARIABLES: (SELECT CONFIGURATION)

- A. VOLTAGE:
14 VDC 28 VDC
- B. BEZEL:
#1 #2 #3 #4
- C. DIAL:
#1 #2 #3
- D. RANGE MARKS (SPECIFY MARKS)
- GREEN _____
- YELLOW _____
- BLUE _____
- RED _____

NOTE: THIS AREA FOR SIGMA-TEK USE ONLY
VARIABLE CHART

	P/L 1V640-001			
	14 VDC		28 VDC	
	LAMP: S21006-020C		LAMP: S21006-021C	
	N/P	PCB	N/P	PCB
	21-169-2-	6C1237-	21-169-2-	6C1237-
DIAL #1	9176	001-13	9176	001-14
DIAL #2	9177	001-46	9177	001-1
DIAL #3	9178	001-46	9178	001-1



A1431M02

CUSTOMER SPECIFICATION
SIGMA-TEK
AUGUSTA, KANSAS

TITLE OIL\COOLANT TEMP MODULE
~~169CL 1-()-() OUT OF PROD.~~
169CL1-1-()-()

SPEC. NO. 6A1431
PAGE 2 OF 2 PAGES
ISSUE F