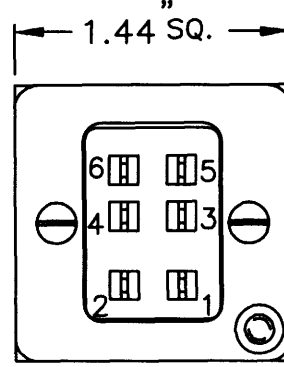
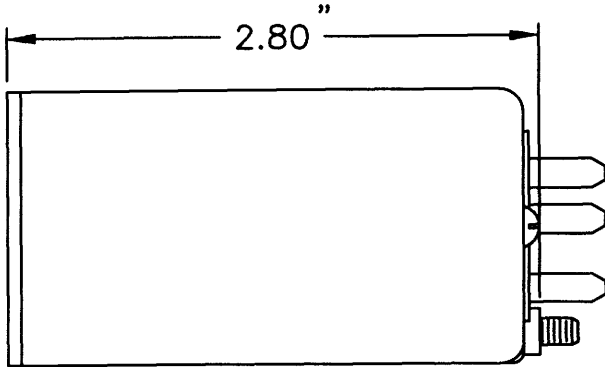


CYL HEAD TEMP CLUSTER MODULE

PART NUMBERS: ~~169CL-2~~ (*) OUT OF PRODUCTION
169CL1-2-(*) Δ

* THIS DASH NO. WILL BE THE SUFFIX NUMBER ASSIGNED TO THE CLUSTER BEING BUILT. EXAMPLE: ~~169CL-2-TD9999~~ (4 PIN CONNECTOR)
169CL1-2-TD9999 (6 PIN CONNECTOR) Δ



1. DIAL & BEZEL GRAPHICS:
LETTERS, NUMERALS & GRADS TO BE WHITE ON BLACK BACKGROUND
2. LIGHTING: BLUE WHITE COLOR
3. RANGE MARKS:
COLORS: GREEN PER 8A070-001
YELLOW PER 8A059-009
BLUE PER 8A059-014
RED PER 8A060-006
SIZE: ARC'S (.06 WIDE)
LINES (.03 x .12)

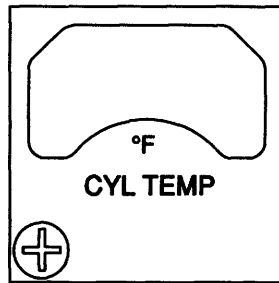
MALE CONNECTOR
SIGMA TEK P/N S24003-004P Δ
MATING CONNECTOR
SIGMA TEK P/N S24003-004S

CONNECTOR WIRING
PIN 1 +14 OR 28 VDC
PIN 2 GROUND (INDICATOR)
PIN 3 TRANSMITTER SIGNAL
PIN 4 +14 OR 28 VDC LIGHTS
PIN 5 OPEN
PIN 6 OPEN
CASE GROUND (LIGHTING)

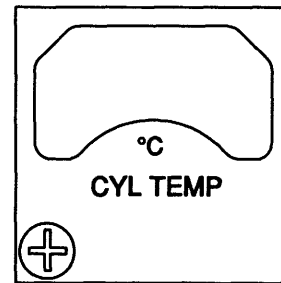
4. THIS UNIT IS APPROVED PER FAA TSO-C43, TYPE I

Δ 5. THIS UNIT IS CALIBRATED TO OPERATE WITH SIGMA TEK PROBE PART NO. S21024-001 (MS24482-1) OR S21026-001 (AN5546-1)

6. BEZELS AVAILABLE:



A/W 5B845-003



A/W 5B845-004

				C	7/29/98	2-8991	JB	DWG. BY	R.SCOTT	10/1/97
E	6/10/13	3-4247	Δ	B	10/14/97	2-8447	JB	APPROVAL		
D	2/3/03	3-1309		JB	A	10/1/97	RELEASE	PROJ. ENG.	J.BISHOP	10/1/97
ISS.	DATE	PCO NO.		CHK	ISS.	DATE	PCO NO.	CHK	NAME	DATE

CUSTOMER ACCEPTANCE SPECIFICATION

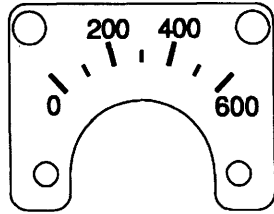
A1432M01

SIGMA-TEK AUGUSTA, KANSAS Δ	CONFIDENTIALITY NOTICE This information is proprietary to SIGMA-TEK Δ , and any reproduction, disclosure, or use thereof is expressly prohibited without the written permission of Sigma Tek, Inc.	TITLE MODULE CYLINDER HEAD TEMP 169CL-2 (*) OUT OF PRODUCTION 169CL1-2-() Δ	SPEC. NO. 6A1432
		PAGE 1 OF 2	ISSUE E

CYL TEMP MODULE

7. DIALS AVAILABLE:

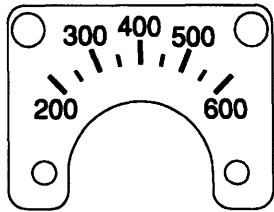
DIAL 1
°F



A/W 5B846-004

FUNCTIONAL TEST		
READING (°F)	TEST (OHMS)	TOL. (±°F)
0	45.20	12
200	76.80	12
400	118.20	12
600	173.80	12
FRICTION ERROR (±12 °F)		
POSITION ERROR (±12 °F)		

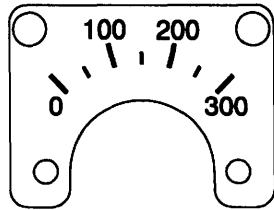
DIAL 2
°F



A/W 5B846-005

FUNCTIONAL TEST		
READING (°F)	TEST (OHMS)	TOL. (±°F)
200	76.80	12
300	96.00	12
400	118.20	12
500	143.80	12
600	173.80	12
FRICTION ERROR (±12 °F)		
POSITION ERROR (±12 °F)		

DIAL 3
°C



A/W 5B846-006

FUNCTIONAL TEST		
READING (°C)	TEST (OHMS)	TOL. (±°C)
0	50.00	6
100	79.00	6
200	116.50	6
300	164.50	6
FRICTION ERROR (±6 °C)		
POSITION ERROR (±6 °C)		

8. VARIABLES: (SELECT CONFIGURATION)

A. VOLTAGE

14 VDC 28 VDC

B. DIAL

#1 #2 #3

C. RANGE MARKS (SPECIFY MARKS)

GREEN _____
 YELLOW _____
 BLUE _____
 RED _____

NOTE: THIS AREA FOR SIGMA TEK USE ONLY VARIABLE CHART

P/L 1V640-001			
14 VDC		28 VDC	
LAMP: S21006-020C		LAMP: S21006-021C	
N/P	PCB	N/P	PCB
21-169-2-	6C1237-	21-169-2-	6C1237-
DIAL #1	9179	001-15	9179 001-23
DIAL #2	9180	001-26	9180 001-2
DIAL #3	9181	001-16	9181 001-23



A1432M02

CUSTOMER SPECIFICATION
SIGMA-TEK®
 AUGUSTA, KANSAS

TITLE MODULE
 CYLINDER HEAD TEMP
~~+69CL-2 (-) OUT OF PRODUCTION~~
 169CL1-2- ()

SPEC. NO. 6A1432 ISSUE E
 PAGE 2 OF 2 PAGES