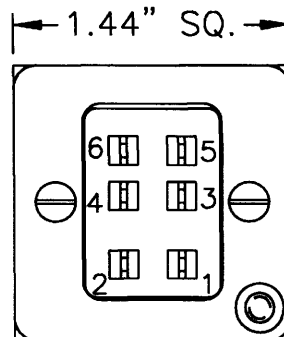
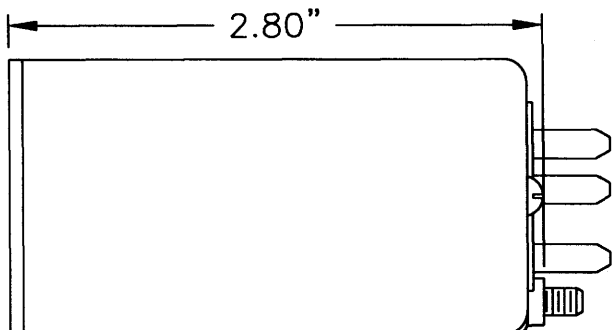


AMMETER CLUSTER MODULE

PART NUMBERS: ~~169CL-7-(*)~~ OUT OF PRODUCTION
169CL1-7-(*) Δ

* THIS DASH NO. WILL BE THE SUFFIX NUMBER ASSIGNED TO THE CLUSTER BEING BUILT. EXAMPLE: ~~169CL-7-TD9999~~ (4 PIN CONNECTOR)
169CL1-7-TD9999 (6 PIN CONNECTOR) Δ



1. DIAL & BEZEL GRAPHICS:
LETTERS, NUMERALS & GRADS TO BE WHITE ON BLACK BACKGROUND

2. LIGHTING: BLUE WHITE COLOR

3. RANGE MARKS:
COLORS: GREEN PER 8A070-001
YELLOW PER 8A059-009
BLUE PER 8A059-014
RED PER 8A060-006
SIZE: ARC'S (.06 WIDE)
LINES (.03 x .12)

MALE CONNECTOR
SIGMA TEK P/N S24003-004P Δ
MATING CONNECTOR
SIGMA TEK P/N S24003-004S

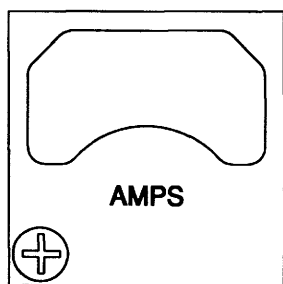
CONNECTOR WIRING

PIN 1 OPEN
PIN 2 +AMPS
PIN 3 -AMPS
PIN 4 +14 OR 28 VDC LIGHTS
PIN 5 OPEN
PIN 6 OPEN
CASE GROUND (LIGHTING)

4. THIS UNIT IS CALIBRATED TO OPERATE WITH A 50 MV SHUNT SIGMA TEK PART NO. 22-370-60 FOR 60 AMP, 22-370-120 FOR 120 AMP, & 22-370-20 FOR 20 AMP.

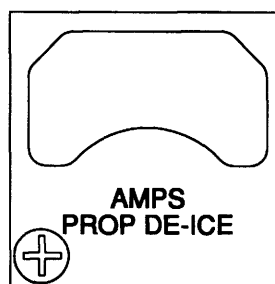
5. BEZEL:

BEZEL #1



A/W 5B845-014

BEZEL #2



A/W 5B845-019

			D	8/28/98	2-8996	JB	PREP. BY	R.SCOTT	10/1/97
			C	5/15/98	2-8795	JB	TYPED BY		
			B	10/14/97	2-8451	JB	PROJ. ENG.	J.BISHOP	10/1/97
E	2/3/03	3-1312	A	10/1/97	RELEASE	JB	CHECKER		
ISS.	DATE	PCO NO.	CHK	ISS.	DATE	PCO NO.	CHK	NAME	DATE

CUSTOMER ACCEPTANCE SPECIFICATION

A1437M01

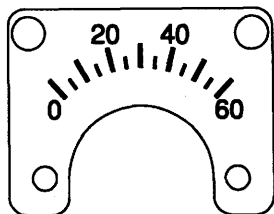
SIGMA-TEK AUGUSTA, KANSAS	TITLE	MODULE AMMETER 169CL-7 () OUT OF PROD. 169CL1-7-() Δ	SPEC. NO.	6A1437	ISSUE	E
	PAGE	1	OF	3	PAGES	

CONFIDENTIALITY NOTICE
 This information is proprietary to SIGMA-TEK®, and any reproduction, disclosure, or use thereof is expressly prohibited without the written permission of Sigma Tek, Inc.

AMMETER MODULE

6. DIALS AVAILABLE:

DIAL 1
AMPS

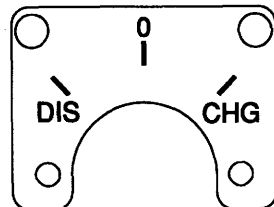


A/W 5B846-011

FUNCTIONAL TEST		
READING	TEST (MV)	TOL. (\pm AMPS)
0	0.00	3
20	17.60	3
40	35.20	3
60	50.00	3

FRICITION ERROR (\pm 3 AMPS)
POSITION ERROR (\pm 3 AMPS)

DIAL 2

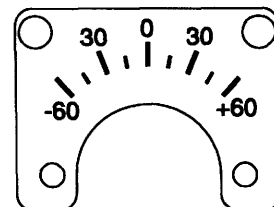


A/W 5B846-012

FUNCTIONAL TEST		
READING	TEST (MV)	TOL. (\pm INCHES)
DIS	-50	.03
0	0	.03
CHG	+50	.03

FRICITION ERROR (\pm .03 INCHES)
POSITION ERROR (\pm .03 INCHES)

DIAL 3
AMPS

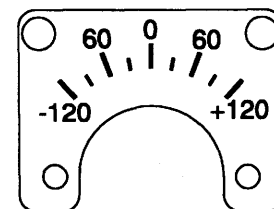


A/W 5B846-013

FUNCTIONAL TEST		
READING	TEST (MV)	TOL. (\pm AMPS)
-60	-50	3
-30	-25	3
0	0	3
+30	+25	3
+60	+50	3

FRICITION ERROR (\pm 3 AMPS)
POSITION ERROR (\pm 3 AMPS)

DIAL 4
AMPS

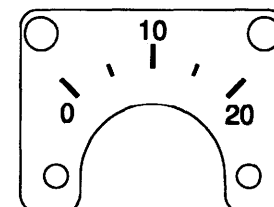


A/W 5B846-014

FUNCTIONAL TEST		
READING	TEST (MV)	TOL. (\pm AMPS)
-120	-50	12
-60	-25	12
0	0	12
+60	+25	12
+120	+50	12

FRICITION ERROR (\pm 12 AMPS)
POSITION ERROR (\pm 12 AMPS)

DIAL 5
AMPS



A/W 5B846-019

FUNCTIONAL TEST		
READING	TEST (MV)	TOL. (\pm AMPS)
0	0	1
10	25	1
20	50	1

FRICITION ERROR (\pm 1 AMP)
POSITION ERROR (\pm 1 AMP)

ACAD 74 A1437M02

CUSTOMER SPECIFICATION

SIGMA-TEK
AUGUSTA, KANSAS

TITLE

MODULE
AMMETER
-169CL-7-(-) OUT OF PROD.
169CL1-7-(-)

SPEC. NO.

6A1437

ISSUE

E

PAGE

2

OF

3

PAGES



AMMETER MODULE

7. VARIABLES: (SELECT CONFIGURATION)

A. VOLTAGE

14 VDC 28 VDC

B. BEZEL

#1 #2

C. DIAL

DIAL 1 DIAL 2 DIAL 3 DIAL 4 DIAL 5

D. RANGE MARKS (SPECIFY MARKS)

GREEN _____
 YELLOW _____
 BLUE _____
 RED _____

NOTE: THIS AREA FOR SIGMA TEK USE ONLY

VARIABLE CHART

	14 VDC			28 VDC		
	LAMP: S21006-020C			LAMP: S21006-021C		
	N/P 21-169-2-	PCB 6C1237-	PARTS LIST	N/P 21-169-2-	PCB 6C1237-	PARTS LIST
DIAL #1	9184	001-22	1V640-005	9184	001-22	1V640-005
DIAL #2	9185	001-4	1V640-006	9185	001-4	1V640-006
DIAL #3	9186	001-4	1V640-006	9186	001-4	1V640-006
DIAL #4	9187	001-4	1V640-006	9187	001-4	1V640-006
DIAL #5	9188	001-22	1V640-005	9188	001-22	1V640-005



A1437M03

CUSTOMER SPECIFICATION SIGMA-TEK® AUGUSTA, KANSAS	TITLE MODULE AMMETER 169CL-7 () OUT OF PROD. 169CL1-7-()	SPEC. NO. 6A1437	ISSUE E
		PAGE 3	OF 3

CONFIDENTIALITY NOTICE
 This information is proprietary to SIGMA-TEK®, and any reproduction, disclosure, or use thereof is expressly prohibited without the written permission of Sigma Tek, Inc.