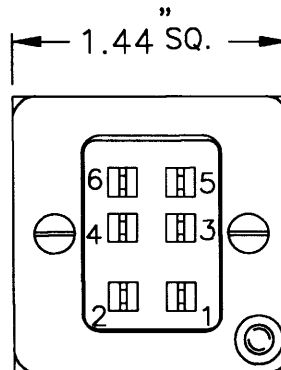
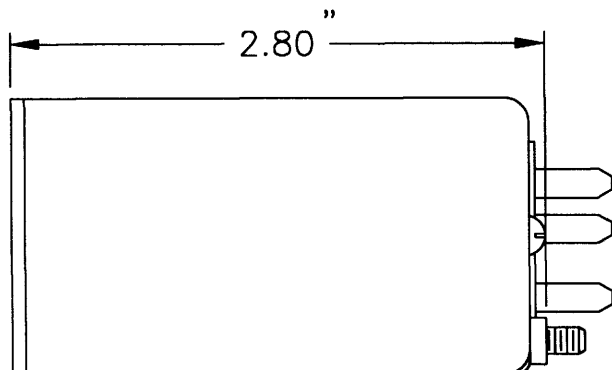


# FUEL PRESSURE CLUSTER MODULE

PART NUMBERS: 169CL-10-(\*)

\* THIS DASH NO. WILL BE THE SUFFIX NUMBER ASSIGNED TO THE CLUSTER BEING BUILT. EXAMPLE: 169CL-10-TD9999



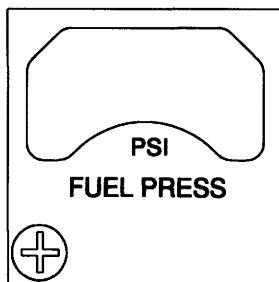
MALE CONNECTOR  
SIGMA TEK P/N S24003-004P  
MATING CONNECTOR  
SIGMA TEK P/N S24003-004S

1. DIAL & BEZEL GRAPHICS:  
LETTERS, NUMERALS & GRADS TO BE WHITE ON BLACK BACKGROUND
2. LIGHTING: BLUE WHITE COLOR
3. RANGE MARKS:  
COLORS: GREEN PER 8A070-001  
YELLOW PER 8A059-009  
BLUE PER 8A059-014  
RED PER 8A060-006  
SIZE: ARC'S (.06 WIDE)  
LINES (.03 x .12)

### CONNECTOR WIRING

- |       |                              |                   |
|-------|------------------------------|-------------------|
| PIN 1 | +14 OR 28 VDC                |                   |
| PIN 2 | GROUND (INDICATOR)           |                   |
| PIN 3 | +8 V TO X'MITTER S18015-006  | } 14 VDC<br>UNITS |
|       | +14 V TO X'MITTER S18014-001 |                   |
|       | +10 V TO X'MITTER S18015-006 |                   |
|       | +10 V TO X'MITTER S18014-001 | } 28 VDC<br>UNITS |
| PIN 4 | SIGNAL FROM TRANSMITTER      |                   |
| PIN 5 | +14 OR +28 VDC LIGHTS        |                   |
| PIN 6 | OPEN                         |                   |
| CASE  | GROUND (LIGHTING)            |                   |

4. THIS UNIT IS APPROVED PER FAA TSO-C47, TYPE II
5. THIS UNIT IS CALIBRATED TO OPERATE WITH SIGMA TEK PRESSURE TRANSDUCER  
△ SIGMA TEK PART NO. S18014-001 (FOR DIAL 1) OR S18015-006 (FOR DIAL 2).
6. BEZELS AVAILABLE:



A/W 5B845-020

**CONFIDENTIALITY NOTICE**

This information is proprietary to SIGMA-TEK®, and any reproduction, disclosure, or use thereof is expressly prohibited without the written permission of Sigma Tek, Inc.

				D	4/2/02	3-1096	JB	PREP. BY	R. SCOTT	8/26/98
				C	10/16/01	3-0871	JB	TYPED BY		
				B	7/3/01	ECO 3-0701	JB	PROJ. ENG.	J. BISHOP	8/31/98
				A	8/26/98	RELEASE	JB	CHECKER		
ISS.	DATE	PCO NO.	CHK	ISS.	DATE	PCO NO.	CHK	NAME	DATE	

### CUSTOMER ACCEPTANCE SPECIFICATION

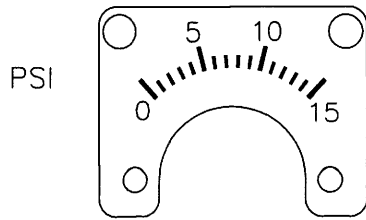
ACAD 86 A1453M01

<p style="font-size: small; margin: 0;">AUGUSTA, KANSAS</p>	TITLE	MODULE FUEL PRESSURE 169CL-10-( )	SPEC. NO.	6A1453	ISSUE	D
	PAGE	1	OF	2	PAGES	

# FUEL PRESSURE

## 7. DIALS AVAILABLE:

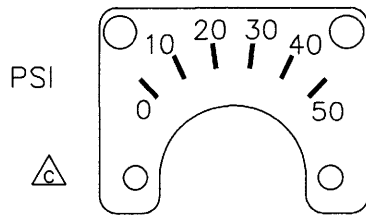
DIAL 1



A/W 5B846-020

FUNCTIONAL TEST		
READING (PSI)	TEST (VOLTS)	TOL. ( $\pm$ PSI)
0	1.00	.3
5	2.66	.3
10	4.33	.3
15	6.00	.3
FRICTION ERROR ( $\pm$ .3 PSI)		
POSITION ERROR ( $\pm$ .3 PSI)		

DIAL 2



A/W 5B846-021

FUNCTIONAL TEST $\triangle$			
READING (PSI)	14 VDC UNIT TEST (VOLTS)	28 VDC UNIT TEST (VOLTS)	TOL. ( $\pm$ PSI)
0	1.00	1.25	1.25
10	1.50	1.88	1.25
20	2.00	2.50	1.25
30	2.50	3.12	1.25
40	3.00	3.75	1.25
50	3.50	4.38	1.25
FRICTION ERROR ( $\pm$ 1.25 PSI)			
POSITION ERROR ( $\pm$ 1.25 PSI)			

## 8. VARIABLES: (SELECT CONFIGURATION)

### A. VOLTAGE

14 VDC  28 VDC

### B. DIAL

$\triangle$  #1  #2

### C. RANGE MARKS (SPECIFY MARKS)

GREEN \_\_\_\_\_  
 YELLOW \_\_\_\_\_  
 BLUE \_\_\_\_\_  
 RED \_\_\_\_\_

NOTE: THIS AREA FOR SIGMA TEK USE ONLY

## VARIABLE CHART

P/L 1V640-002 $\triangle$			
14 VDC		28 VDC	
LAMP: S21006-020C		LAMP: S21006-021C	
N/P	PCB	N/P	PCB
21-169-2-	6C1237-	21-169-2-	6C1237-
DIAL #1 9167	002-58	9167	002-1
DIAL #2 9173	002-49	9173	002-61

**CONFIDENTIALITY NOTICE**  
 This information is proprietary to SIGMA-TEK®, and any reproduction, disclosure, or use thereof is expressly prohibited without the written permission of Sigma Tek, Inc.

ACAD 86 A1453M02

CUSTOMER SPECIFICATION <b>SIGMA-TEK®</b> AUGUSTA, KANSAS	TITLE MODULE FUEL PRESSURE 169CL-10-( )	SPEC. NO. 6A1453	ISSUE D
		PAGE 2	OF 2 PAGES